

Burlington®

Welcome to the Bathroom Brands Technical Whitebook



[Home](#) > [Whitebook](#) > [Radiators](#) > Strand radiator with angled valves

Strand radiator with angled valves



As Shown

R11 CHR Strand radiator

Colour

R11 CHR - radiator - chrome

Material

R11 CHR - radiator - steel

Size

R11 CHR - 406 x 642 x 404mm

Nett Weight

R11 CHR - radiator - 6.44kg

Gross Weight Including Packaging

R11 CHR - radiator - 7.44kg

Packed Dimension

R11 CHR - 675 x 430 x 430 = 0.1248 m3

Guarantee

5 year guarantee*

[*Full terms & conditions here](#)

Standards Information

R11 CHR - WRAS Not Applicable

BS EN 442-1:2015

BS EN 2767:1991

BS EN 442-2:2015

BS EN 248:2002

Additional Information

400mm High x 640mm Wide.32mm tubes.

Output: 522 BTUs/153 watts ($\Delta T=50^{\circ}C$)

Distance from wall to the rail is 390mm.

Includes all brackets and fixings.

High quality chrome plated finish.

Designed to be plumbed into your central heating system.

Operating pressure up to 8 bar.(Certified by BEN N.L)

Maximum working temperature:95°C

440mm plumbing pipe centers

Compatible Products

R6 CHR - Angled radiator valves chrome

[Spare parts \(click to display spare parts for this product\)](#)

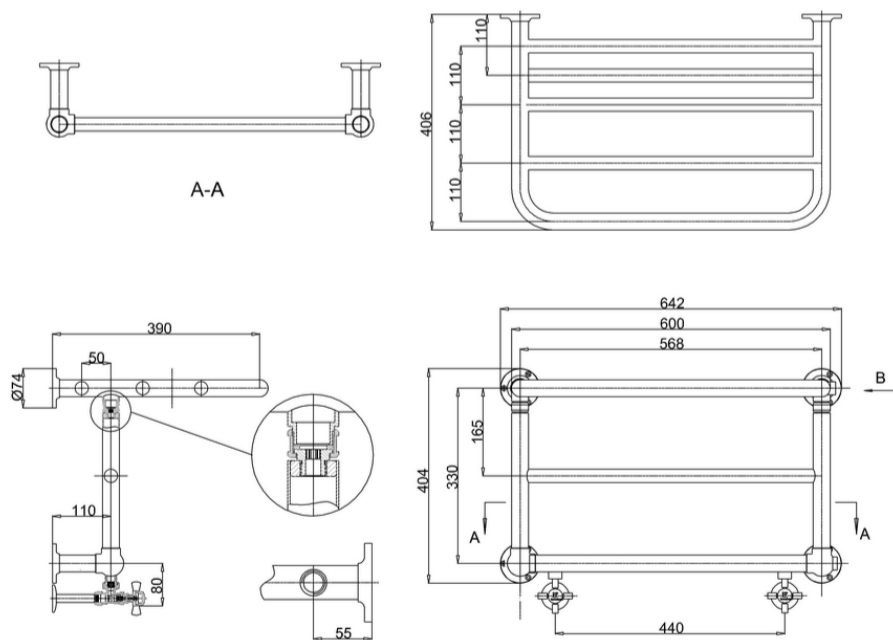











Downloads

Instructions - PDF - R11 CHR (English)



Instructions - PDF - R11 CHR (French)



- [2D CAD-File - DWG - R11 CHR](#) 
- [2D Drawing - PDF - R11 CHR](#) 
- [3D DWG - File - DWG - R11 CHR](#) 
- [3D DXF - File - DXF - R11 CHR](#) 
- [3D IGS - File - IGS - R11 CHR](#) 
- [3D RFA BIMM Objects - File - RFA - R11 CHR](#) 
- [Lifestyle image 1 - !\[\]\(4d34001966c7597a8c3e4293694bde37_img.jpg\)](#) [jpg](#)  [tiff](#) 
- [Cutout image 1 - !\[\]\(6ed942f5426e79452fae08b09c55d70a_img.jpg\)](#) [jpg](#) 

* Please note that some of the drawings might not be drawn to scale. Please refer to actual dimensions marked on the drawings.