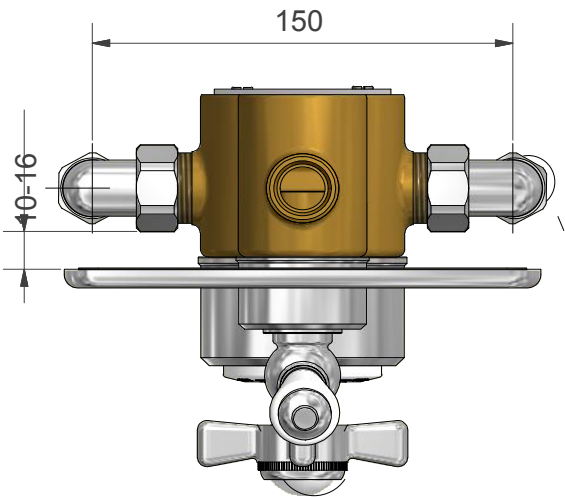
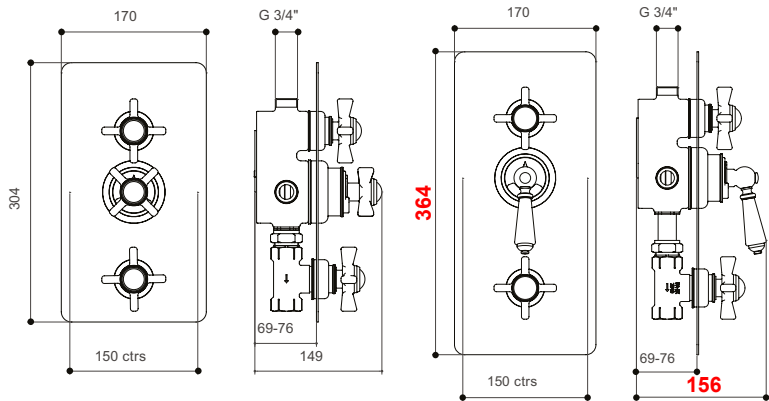


PRODUCT DATA SHEET

RANGE: Traditional Style Shower Valve

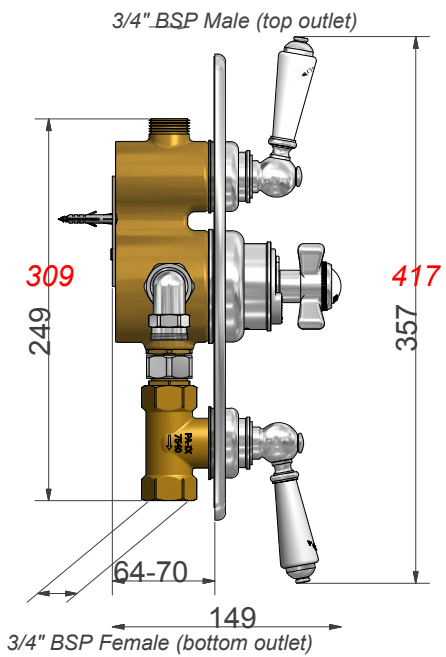
CODE: SJ7700


DESCRIPTION: Concealed Thermostatic Valve with Integral Flow Valves



Supply connections are 15mm compression, and can be swivelled for top, bottom or horizontal feed. Hot is on left, cold is on the right (viewed from front).

Fitting Depth: min 64mm to max 70mm from finished tiled surface to rear of fixing when used with Traditional valves. Extension kits available on request



FLOW RATES:  *When lever option is chosen for temperature handle (middle) use height sizes in red text*

BAR PRESSURE	BAR 0.5	BAR 1.0	BAR 3.0	BAR 5.0
LITRES PER MINUTE	-	20	35	44